



## What is Vision Zero? Can it Coexist with TZD?

Michelle Pooler | State Program Coordinator



## Vision Zero

### Background

- Established in 1994
- No loss of life is acceptable

### Cornerstones

- Safety comes first
- Shared responsibility
- Based on science and documented experience

● Number of deaths ● Traffic volume



## Vision Zero Toolkit

### Design

- Wider roads are undesirable
- Separation and speed
- Design elements

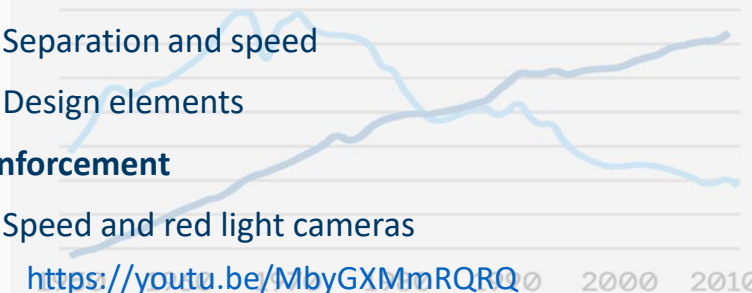
### Enforcement

- Speed and red light cameras

<https://youtu.be/MbyGXmmRQRQ>

- Technology and innovation

● Number of deaths ● Traffic volume



## Considerations

- Distraction
- Land use
- Less driving
- Impaired driving

## Vision Zero Cities

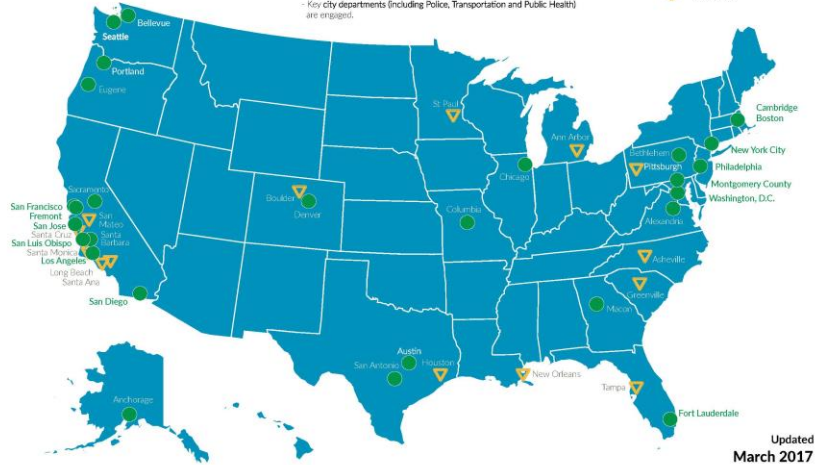
### Vision Zero Cities

A Vision Zero City meets the following minimum standards:

- Sets clear goal of eliminating traffic fatalities and severe injuries
- Mayor has publicly, officially committed to Vision Zero
- Vision Zero plan or strategy is in place, or Mayor has committed to doing so in clear time frame
- Key city departments (including Police, Transportation and Public Health) are engaged.

 Vision Zero City

 Considering Vision Zero



## TZD and Vision Zero

### TZD:

- Fewer than 300 fatalities and 850 serious injuries on Minnesota's roads by 2020
- Integrated application
- Priority
- Culture and behavior

### Vision Zero:

- Eventually no one will be killed or seriously injured
- Evidence based
- Elevated idea
- System

## Coexist

- TZD and Vision Zero
- One size doesn't fit all
- Adaptability
- End goal is zero

## Opportunities

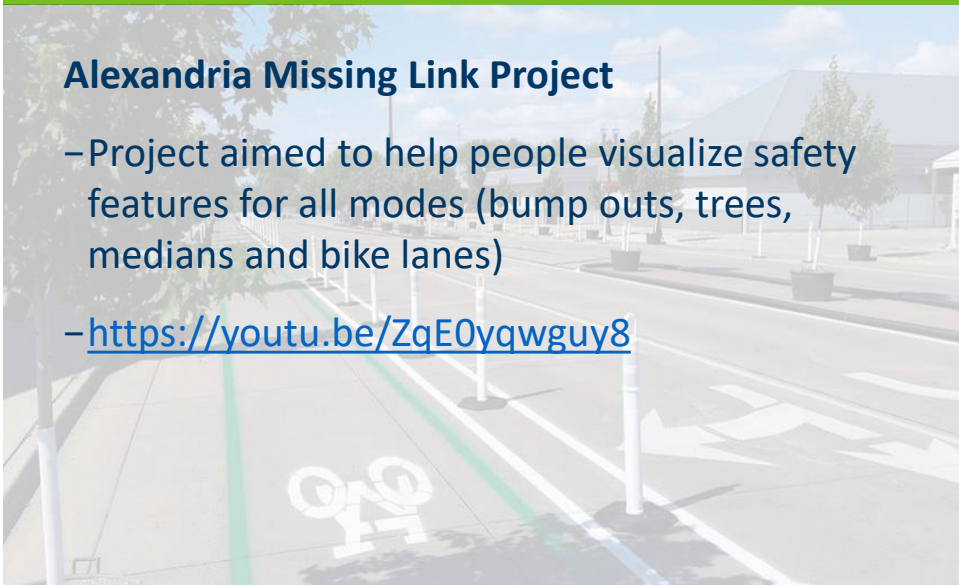
- Pedestrian fatalities
- Vision Zero and vulnerable road users
- Local initiatives

## Demonstration Projects

### Alexandria Missing Link Project

- Project aimed to help people visualize safety features for all modes (bump outs, trees, medians and bike lanes)

– <https://youtu.be/ZqE0yqwguy8>



## Demonstration Project

### Albany

- Temporary shared use paths and stop signs

### Foley

- Parallel parking spots, widened sidewalks, and bicycle lanes



## Crosswalk Events

- St. Paul
- Winona
- Howard Lake
- Waite Park



## Youth

### Safety Town

- Basic traffic rules and regulations
- Potential hazards
- Skills needed to walk effectively, appropriately and safety through their communities





Thank you!

**Michelle Pooler**

*michelle.pooler@state.mn.us*

651-366-4167