



Highway 61
North Shore of Lake Superior

FHWA Minnesota Division

Mini-Roundabouts

Towards Zero Deaths Conference

October 24, 2019



U.S. Department of Transportation
Federal Highway Administration

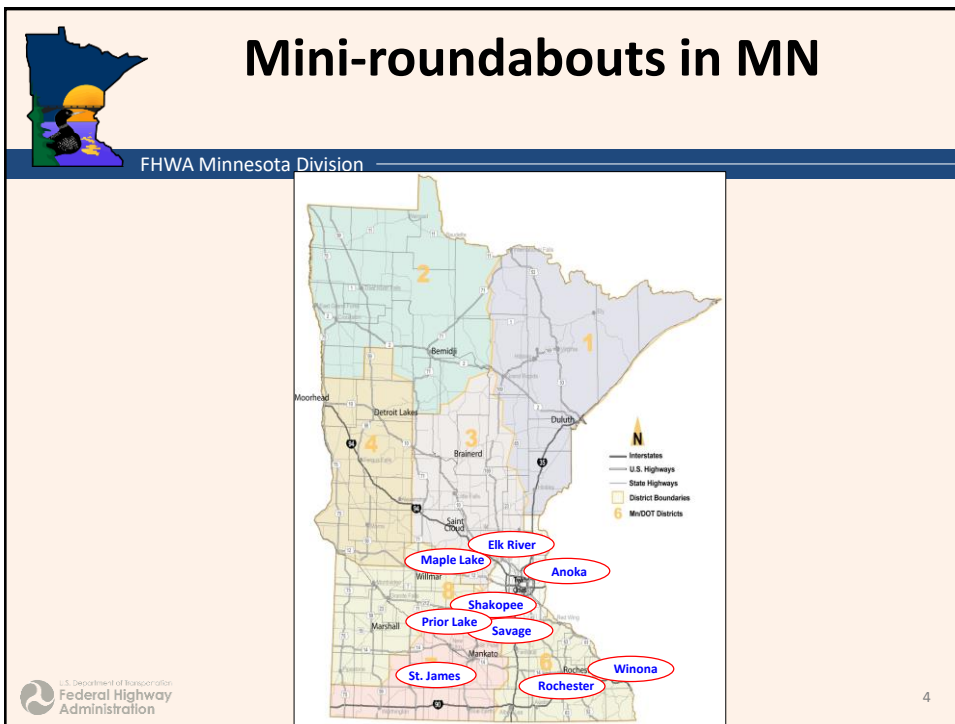
WILL STEIN
FHWA – Minnesota Division




Mini-roundabout (Hartford County, Maryland)

FHWA Minnesota Division








Mini-roundabouts in MN

FHWA Minnesota Division

Constructed or Scheduled for 2017 Completion
Duluth Avenue and Village Lake Drive, Prior Lake (2019)
County Road 8, Division Street, Elm Avenue, Maple Lake (2018)
Mn Highway 4 (1 st Ave) and Armstrong Blvd, St. James (2017)
Mn Highway 4 (1 st Ave) and 7 th Street, St. James (2017)
18 th Ave NW (County Road 112) and 48 th St NW, Rochester (2017)
Washington Street/4 th Avenue/Military Road, Anoka (2017)
Louisiana Avenue and South Park Drive, Savage (2016)
Gilmore Avenue, near US 61, Winona (2016)
Spencer Street (County Road 79) and Vierling Drive, Shakopee (2014)
Railroad Drive/3 rd Street NW/Irving Avenue NW, Elk River (2013)

U.S. Department of Transportation
Federal Highway
Administration

5




Mini-roundabouts

FHWA Minnesota Division

- A single lane roundabout with inscribed circle diameter between 50 – 90 ft.
- Raised but traversable central island and splitter islands.
- Intersections on 2-lane or 3-lane high-volume collector roads.
- Speed 35 mph or less. Sometimes 45.
- Low truck/bus volume.


U.S. Department of Transportation
Federal Highway
Administration

6



Tractor-trailer Hartford County, MD


FHWA Minnesota Division



Tractor Trailer

U.S. Department of Transportation
Federal Highway
Administration

7



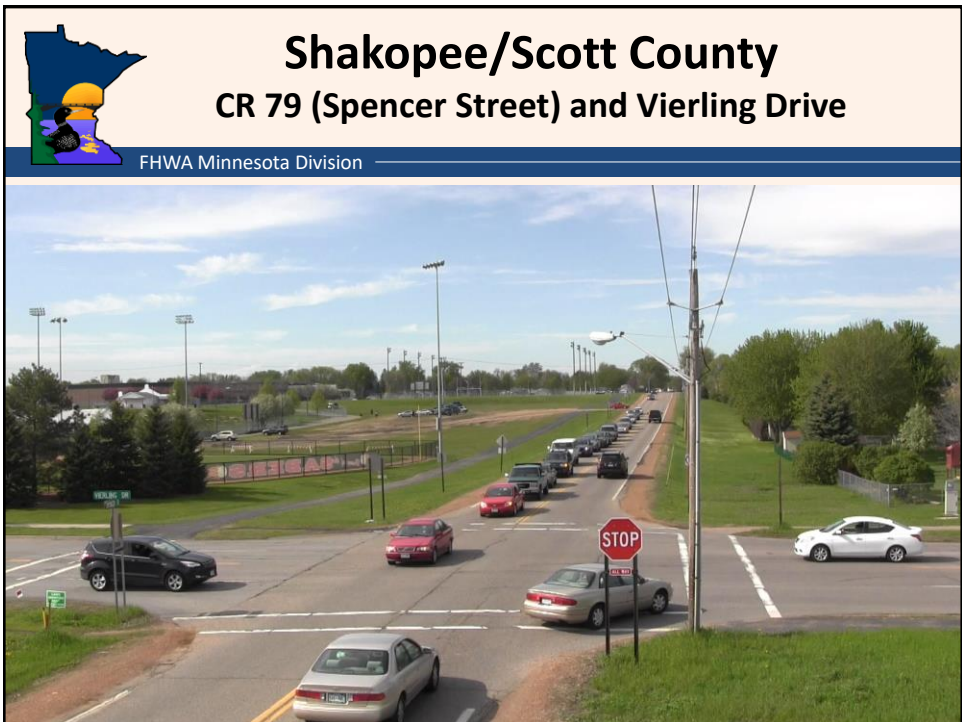
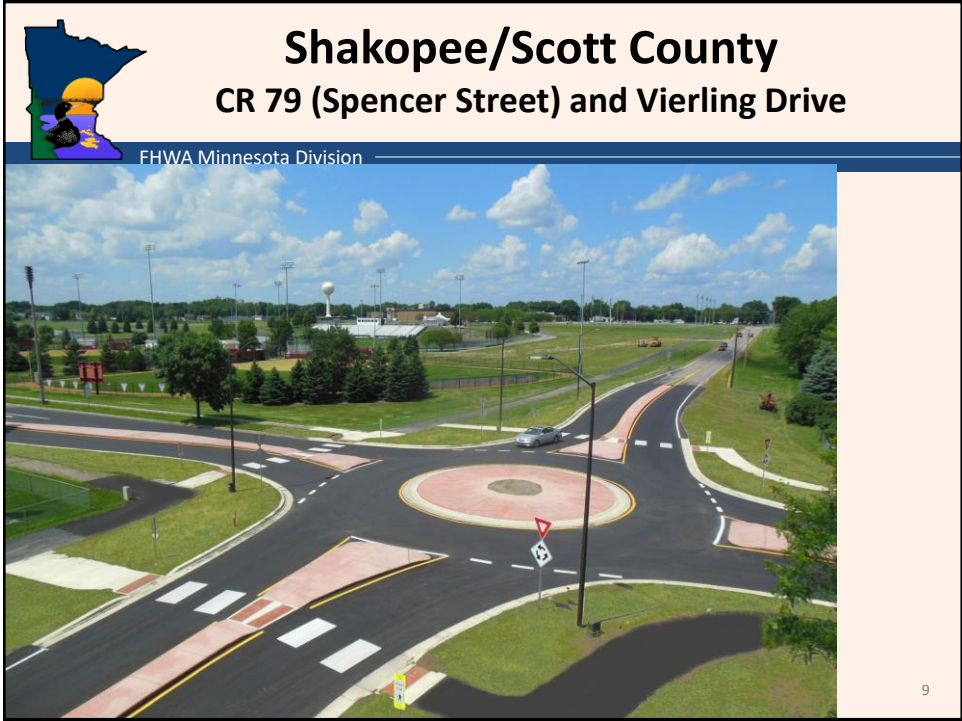
Benefits

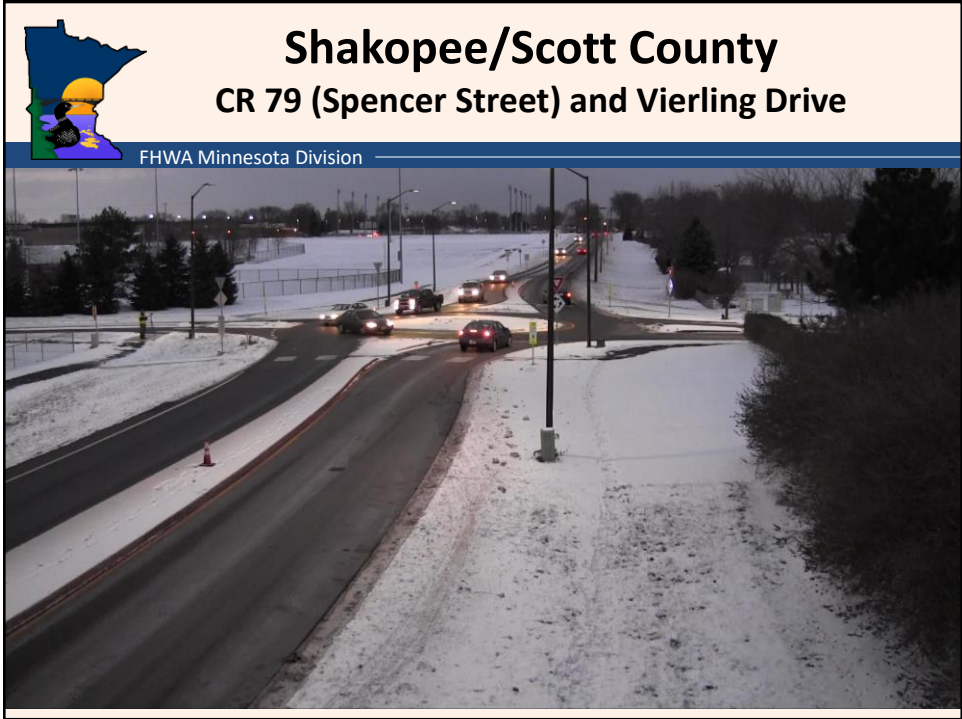
FHWA Minnesota Division

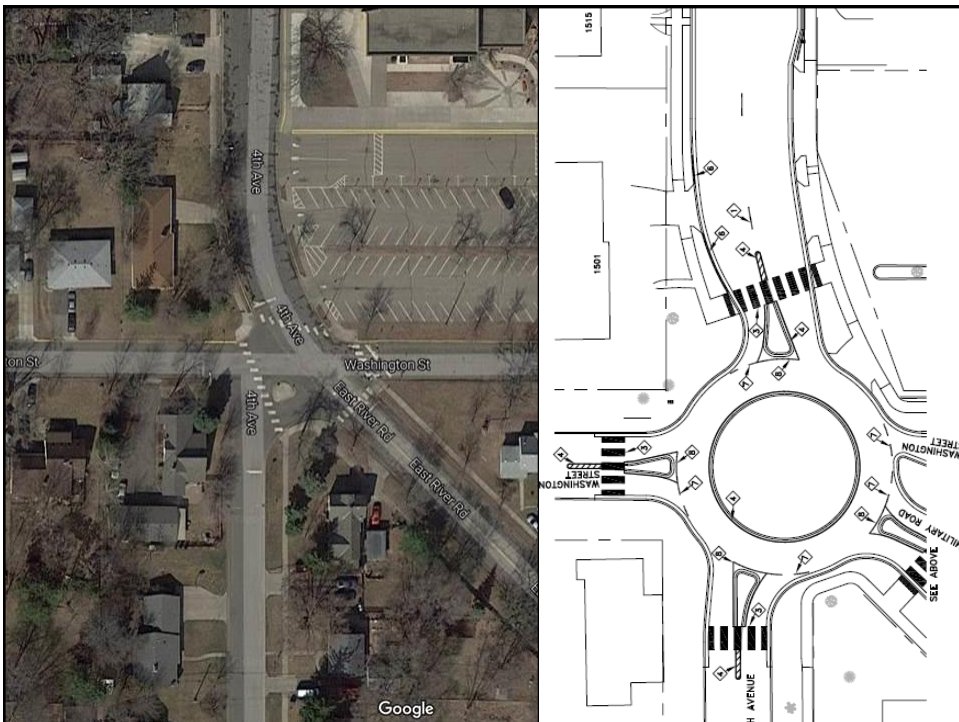
- Fits within existing intersection.
 - No additional right-of-way.
- Low construction cost.
- Less fuel use.
 - Lower emissions.
- Efficient traffic operations.
- Increased safety.
 - Fewer conflict points.
 - Prevents right-angle crashes.
 - Reduced speed.
 - Shorter pedestrian crossings.


U.S. Department of Transportation
Federal Highway
Administration

8











School buses Hartford County, MD


FHWA Minnesota Division



School Bus

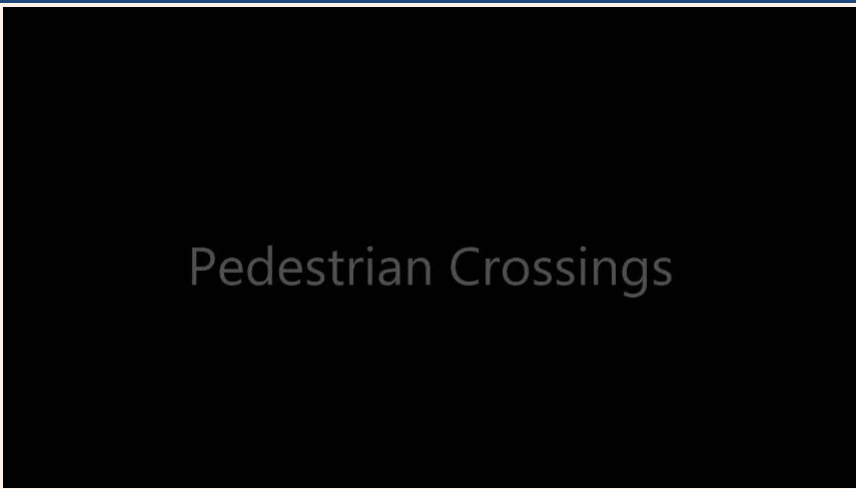


15




Pedestrians Hartford County, MD

FHWA Minnesota Division



Pedestrian Crossings



16



Maple Lake

County Road 8, Division Street, Elm Avenue

FHWA Minnesota Division

21

Elk River


Railroad Drive/3rd Street NW/Irving Avenue NW

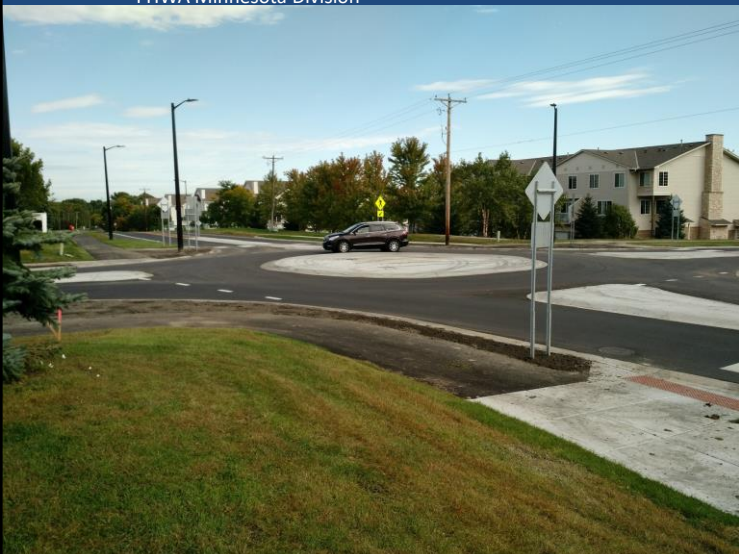
FHWA Minnesota Division

 **City of Savage**
Louisiana Avenue and South Park Drive
FHWA Minnesota Division



23

 **City of Savage**
Louisiana Avenue and South Park Drive
FHWA Minnesota Division




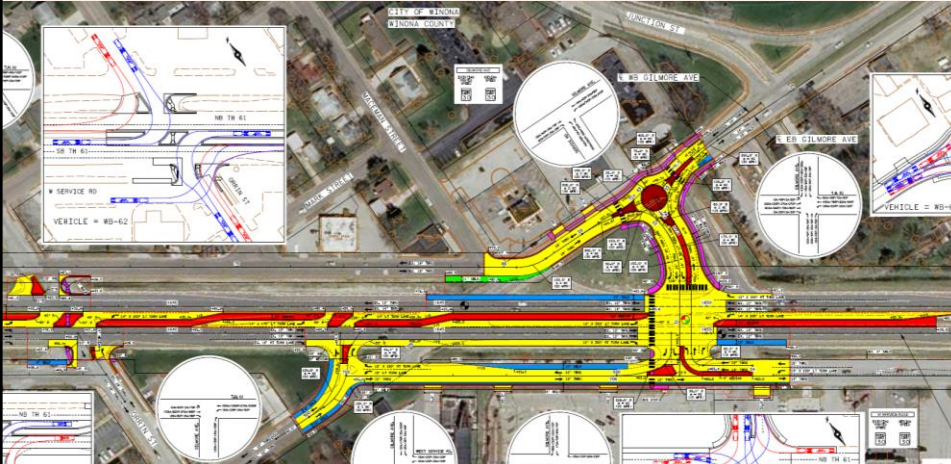
24

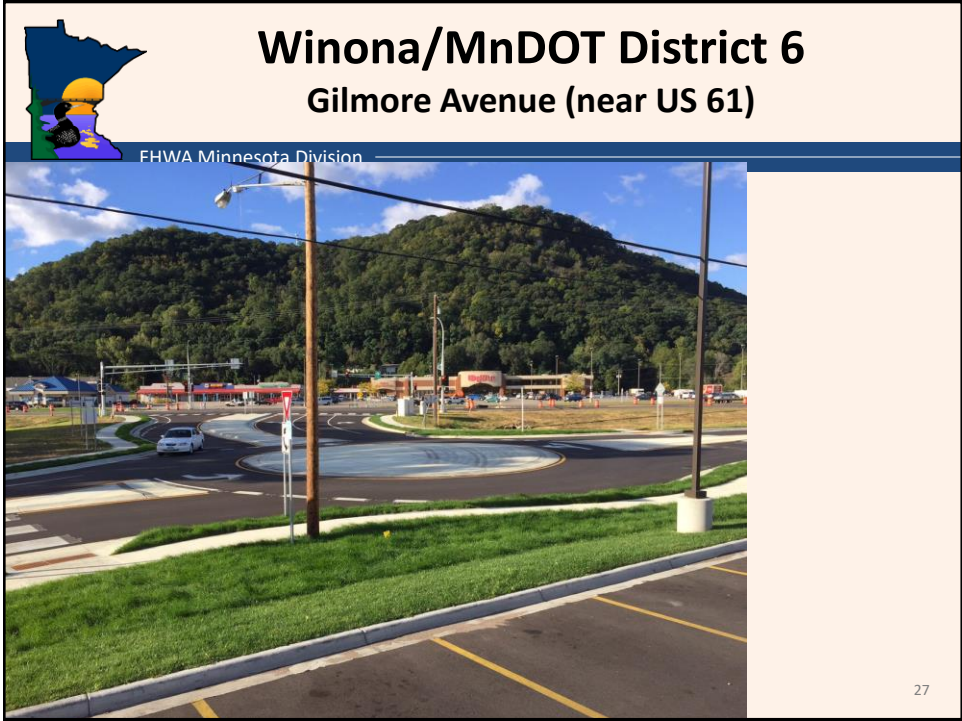
 **City of Savage**
Louisiana Avenue and South Park Drive
FHWA Minnesota Division




25


 **Winona/MnDOT District 6**
Gilmore Avenue (near US 61)
FHWA Minnesota Division






 **City of Prior Lake**
Duluth Avenue and Village Lake Drive


FHWA Minnesota Division



29

 **City of Prior Lake**
Duluth Avenue and Village Lake Drive

FHWA Minnesota Division



30

